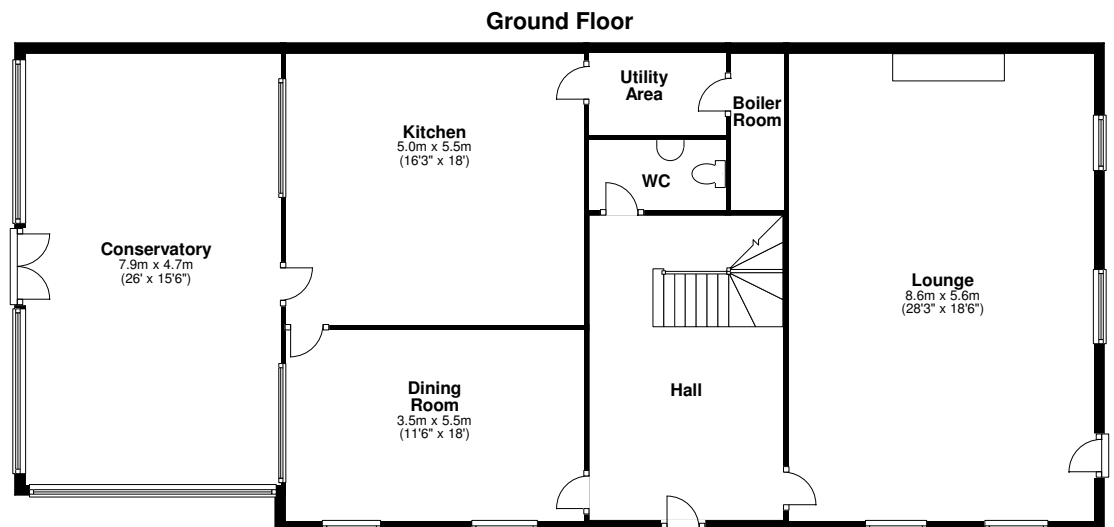
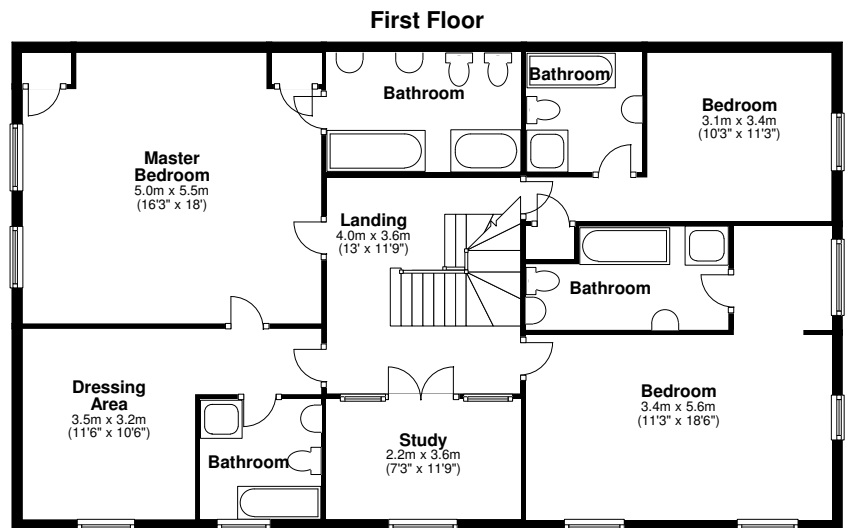
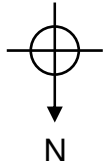
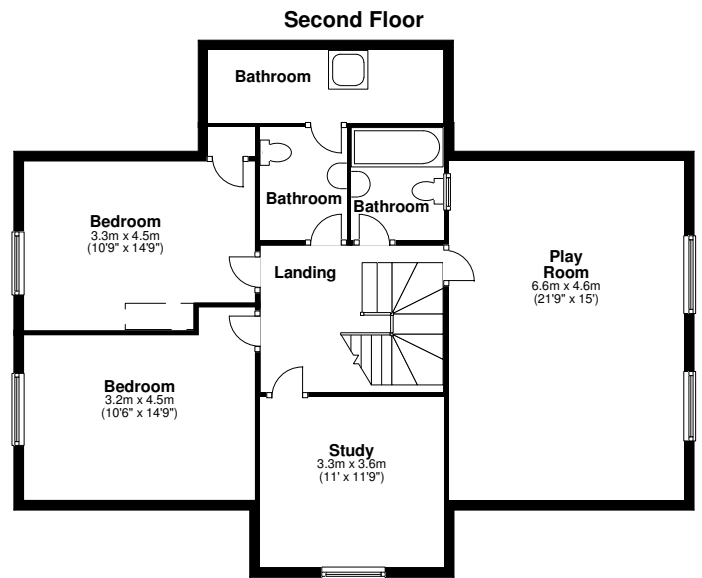


Ground floor area:
 163.0sqm 1,744sqft
 First floor area:
 126.0sqm 1,348sqft
 Second floor area:
 98.0sqm 1,048sqft
 Total floor area:
 387.0sqm 4,140sqft



Dower House, Runnymede Park, Tite Hill, Egham, Surrey, TW20 0NB.

This floorplan is for guidance, not drawn to scale. Measurements are to the nearest 0.1m.
 All dimensions should be checked before making any decisions based upon them