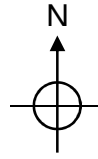
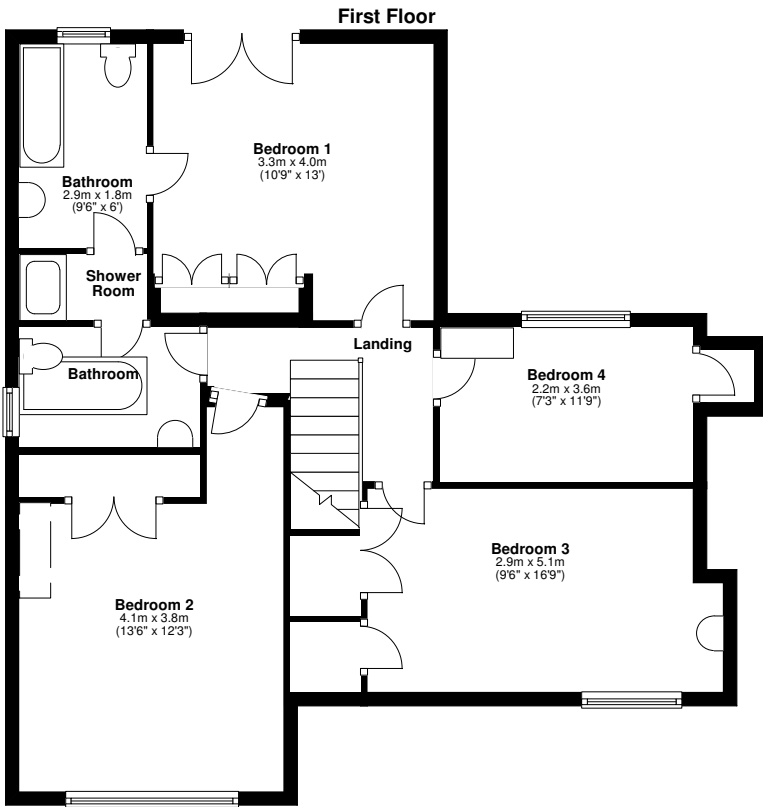


Ref 207, Nun's Walk, Virginia Water, Surrey, GU25 4RT.



Ground floor area = 117.0sqm / 1,252sqft
 First floor area = 80.0sqm / 856sqft
 Total floor area = 197.0sqm / 2,108sqft

Carr's Lettings
www.carrslettings.com
 01344 842 876

This floorplan is for guidance, not drawn to scale.
 Measurements are to the nearest 0.1m.
 All dimensions should be checked before making any decisions based upon them. Measurements are taken through cupboards/wardrobes to the wall if possible.
 CM DESIGN © 2006-08-04

