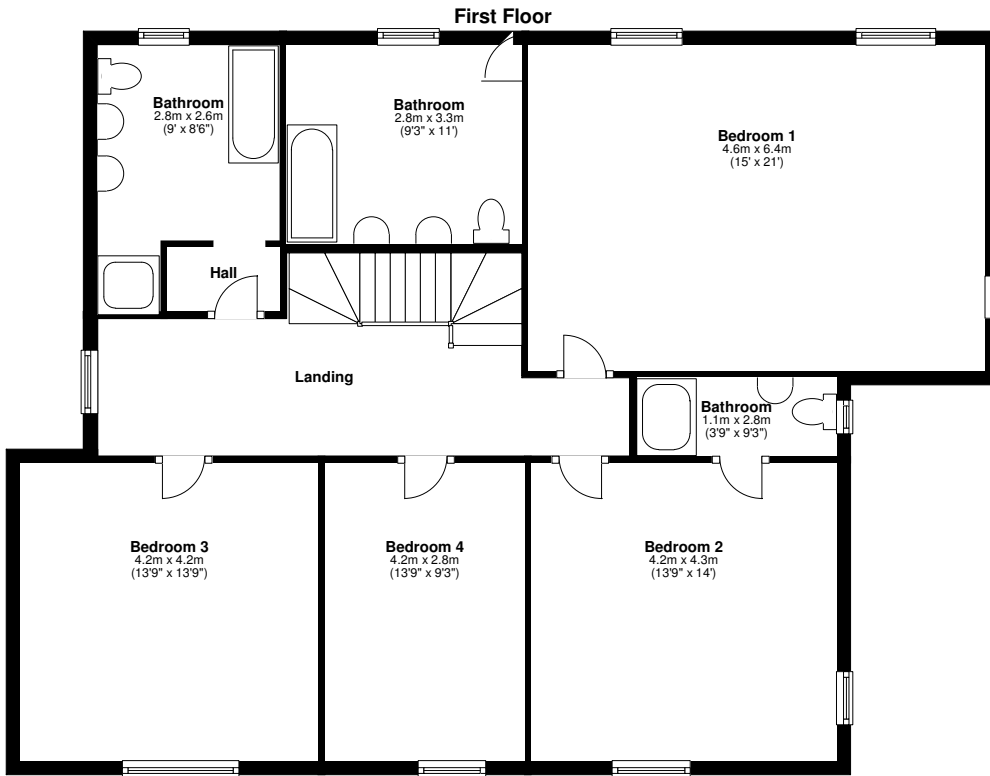
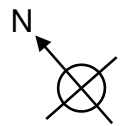
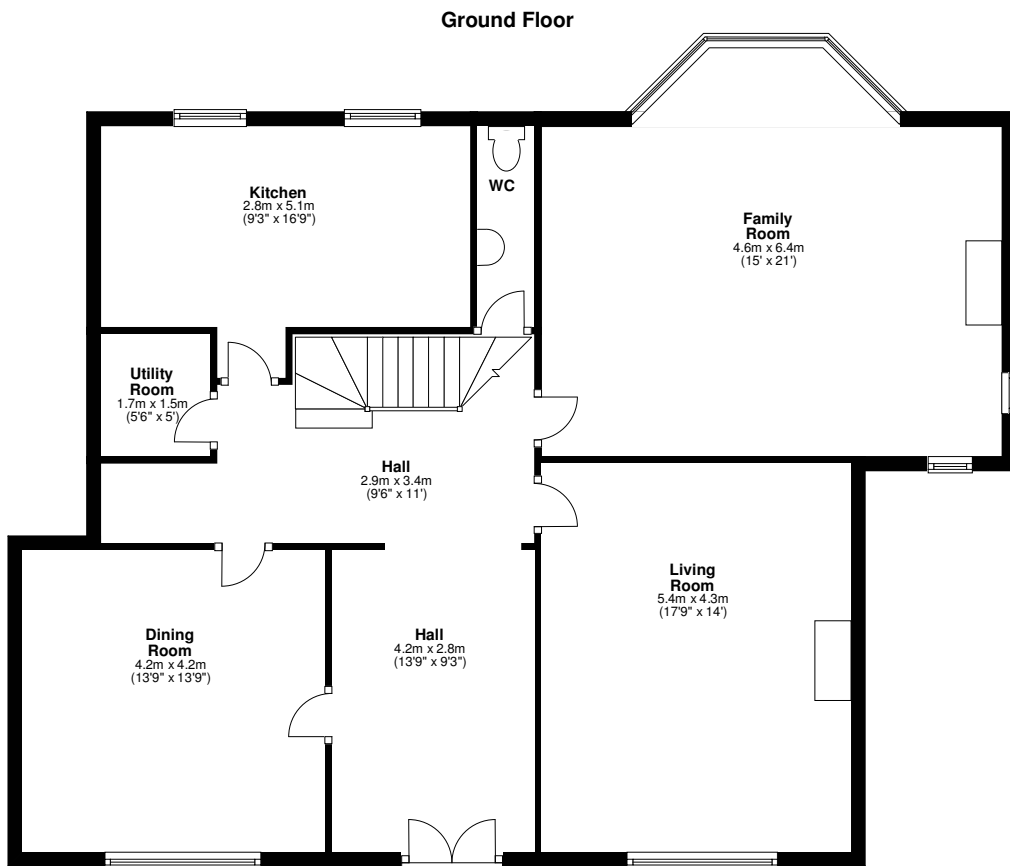


Ref 126, London Road, Sunninghill, SL5 0PP.



Ground floor area = 91.0sqm 973sqft
 First floor area = 91.0sqm 973sqft
 Total floor area = 182.0sqm 1947sqft



This floorplan is for guidance, not drawn to scale. Measurements are to the nearest 0.1m.

All dimensions should be checked before making any decisions based upon them. Measurements are taken through cupboards/wardrobes to the wall if possible.