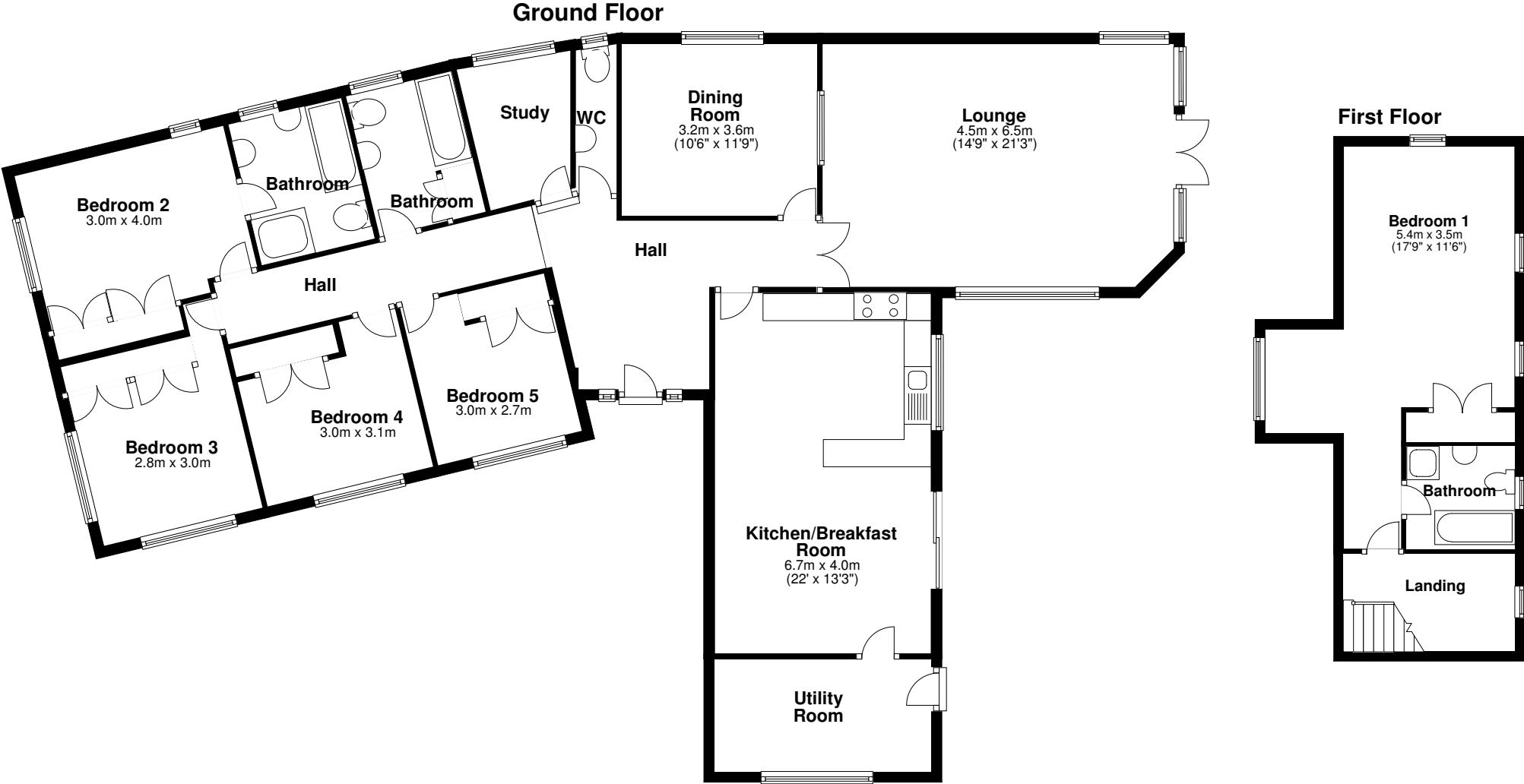


Ref 109, Stroude Road, Virginia Water, Surrey, GU25 4DB.



Ground floor = 127sqm 1,359sqft
First floor = 38sqm 406sqft
Total Area = 165sqm 1,765sqft

This floor plan is for guidance, not drawn to scale. Measurements are to the nearest 0.1m.
All dimensions should be checked before making any decisions based upon them.
CM DESIGN © 2010-19-01